

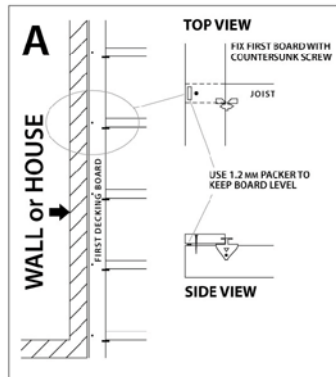
SAFETY FIRST

Ensure that appropriate safety eye, ear and foot protection is worn at all times.

BEFORE YOU START

- Always consult your local authority to verify the suitability of the building materials you intend to use.
- Read these instructions through thoroughly before you start.
- These instructions are provided to help you get the best from Sharkstooth and are not instructions for building a deck.
- Ensure that your joists are secure and level.
- Check your Building Code for the required gap between the house and the first decking board.
- Make sure that the decking timber you are using has been properly treated and seasoned.
- For best results, use only A-Grade boards. Avoid any knotted or twisted boards.
- If you are using green, pressure-treated timber, we suggest installing Sharkstooth with little or no gap to allow for the shrinkage.
- Hardwoods may need to be slotted (see Installing Hardwoods).
-

LAYING THE FIRST BOARD - (Diagram A)



Start your deck by laying the first decking board next to the house onto packers, taking care to select a board that is straight and parallel. For a packer use a suitable building material of 1.0 – 1.5mm thick.

At each joist, secure the first board with one countersunk stainless steel screw. Ensure the deck board is sitting on the packer.

At the end of the job, glue wooden plugs into the countersunk screw holes, trim with a chisel and sand to finish. Tools for countersinking and making wooden plugs, can be purchased from either your local retailer or direct from: www.sharkstooth.co.nz

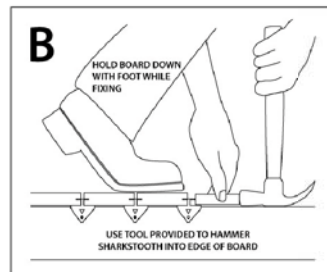
INSTALLING THE FIRST SHARKSTOOTH

Position the shoulder of the Sharkstooth on the top of the joist and under the edge of decking board. Ensure the Sharkstooth is square on the top and side of the joist and that the point of the spike is touching the side of the decking board.

Position the special driving tool (supplied) onto the Sharkstooth so that the outer spike is located in the slot of the driving tool, ensure the tool is seated squarely on the top and side of the joist.

Using a hammer, drive the Sharkstooth into the side of the decking board to the required depth. It is important to stand on the board to maintain downward pressure while the Sharkstooth is being driven in. Ensure the Sharkstooth penetrates the board in a straight and even manner and that the protruding spike is left parallel to the joist.

Fasten the Sharkstooth to the side of the joist using a supplied stainless steel nail through the round hole. Do not fit the nail through the triangular hole. After nailing the Sharkstooth to the joist, check that the protruding spike is parallel to the joist - adjust if required. Work your way along the decking board installing one Sharkstooth on each joist. The next row of fasteners should be installed on the opposite side of the joist so that they alternate as each subsequent board is installed (see Diagram D).



INSTALLING THE NEXT BOARD

Position the next board on top of the joists, with the side of the board touching the row of spikes of the installed Sharkstooth. Stand on the next board to be installed and lay a length of timber eg. 4"x2" (100 x 50mm) against the outside of the board. Use a heavy hammer to strike the length of timber and drive the decking board onto the spikes of the Sharkstooth. It is important to keep your weight on the board being driven as you work your way along. (See Diagram C). Drive the board until it touches the neck of the Sharkstooth. This provides a 5mm drainage gap. If a smaller gap is required, or if the boards are expected to shrink, tap the board until the required gap is achieved.

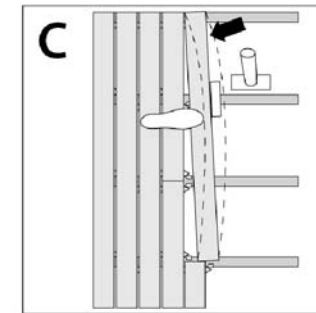
Repeat the above steps until you reach the last board.

INSTALLING A BOWED BOARD

Place the bowed board so that the bow is away from the previous board. (See Diagram C). For long boards with a large bow, it is advisable to get someone else to stand on the end of the board as you drive it onto the spikes.

As you drive the bowed board onto the spikes, fix your next Sharkstooth and nail off to the joist. This will help hold the board and prevent springing. This will allow you to straighten the bowed board. It is important to check that your installation is kept parallel by using a string line and tape measure every few boards.

Where possible, install Sharkstooth on alternate sides of the joist as the boards are installed. (See figure D).



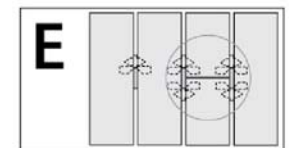
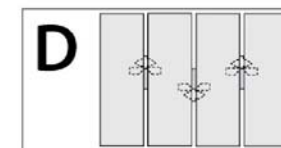
BUTT-JOINING TWO BOARDS

Make sure the join is in the centre of the joist.

At the end of each board to be joined, fit a Sharkstooth to both sides of the board (see Diagram E).

When fitting a board to a join start at the end away from the join and work your way along each joist to the join to ensure a tight fit (see Diagram C).

If required install a wooden packer to the sides of the joist to further move the Sharkstooth away from the ends of the boards to be joined.



INSTALLING THE FINAL BOARD

Once you have cut the last board to the required size, fit packers to the outside of each joist in the same manner as the first board that was installed.

Fit the last board and finish off with one countersunk stainless steel screw per joist. Plug, trim and sand down just as with the first board next to the house.

NOTES

- Check the boards are kept straight and parallel using a tape measure and string line.
- It is imperative that the Sharkstooth fastener is installed in a straight and even manner. A pilot hole may be the best solution should any board prove difficult to achieve this.
- Fit the Sharkstooth to alternate sides of the joist for each board.
- Glue wooden plugs taken from the decking you are using to fill the countersunk screw holes. Trim with a chisel and sand down to finish.
- When installing onto a steel joist or purlin, use a self drilling screw instead of the stainless steel nail.
- Do not fix Sharkstooth into knots in the timber.

INSTALLING HARD-WOODS

Some timbers - particularly dry hardwoods, can be prone to splitting. In such circumstances it may be necessary to cut a slot into the decking board. Using a router with a 1.5mm slot cutter, set the router height to the point where the Sharkstooth will penetrate the side of the decking board. The bottom of the proposed slot-cut should be 10mm up from the base of the decking board. At each point where the Sharkstooth will be installed, cut a slot to a depth of approximately 4mm with a length of approx. 30 - 50mm. A router can be purchased from your local hardware store or are available for hire from most hire centres. The 1.5mm slot cutter tool bit can be purchased from a tool store or directly from 2 Guns Ltd for \$50.00 incl GST.



1.5mm Slot-Cutter

HOW MANY WILL I NEED?

This table will help you to work out the minimum number of fasteners you will need. This table does not allow for any joins. For each join add another 2 fasteners to your total. Round up your total required to the nearest 250.

USAGE GUIDE

	Board Width	90mm	140mm
Joist Centres	400mm	31 units/m ²	21 units/m ²
	450mm	28 units/m ²	18 units/m ²
	500mm	25 units/m ²	17 units/m ²
	550mm	23 units/m ²	15 units/m ²
	600mm	21 units/m ²	14 units/m ²

Sharkstooth is available in two pack sizes:

SKT250 pack of 250

SKT1000 pack of 1000

WARRANTY STATEMENT

We warranty Sharkstooth to be free of any defects in the manufacturing process. Suitability of Sharkstooth and its use is the responsibility of the installer. Due to the variables involved with working in a building zone, the type of and quality of timber used, the warranty does not extend to the installation of Sharkstooth. The suitability of Sharkstooth and its intended use are the responsibility of the installer.

2 Guns Ltd does not accept any responsibility or liability for personal injury or property damage that may arise from the use of Sharkstooth or any other of its products. These instructions are a guide for installing Sharkstooth fasteners.

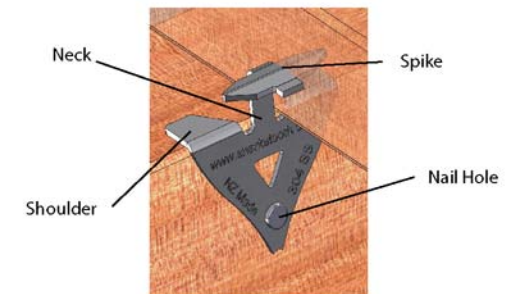
They are not instructions for how to build a deck. Always consult your local authority to verify the suitability of the building materials you intend to use.

**A Product of 2 Guns Ltd:
PO Box 302 300, North Harbour
Auckland 0751
New Zealand
+64 9 414 7488
sales@2guns.co.nz**



INSTRUCTIONS

- *Prolong the Life of your Deck*
- *Smooth Nail-Free Finish*
- *Simple to Use*
- *Safe and Strong*
- *304 Stainless Steel*
- *New Zealand Made*



Sharkstooth in place, ready for the next board

Quite Simply, Sharkstooth Works

www.sharkstooth.co.nz

The Hidden Deck-Fastener with BITE!